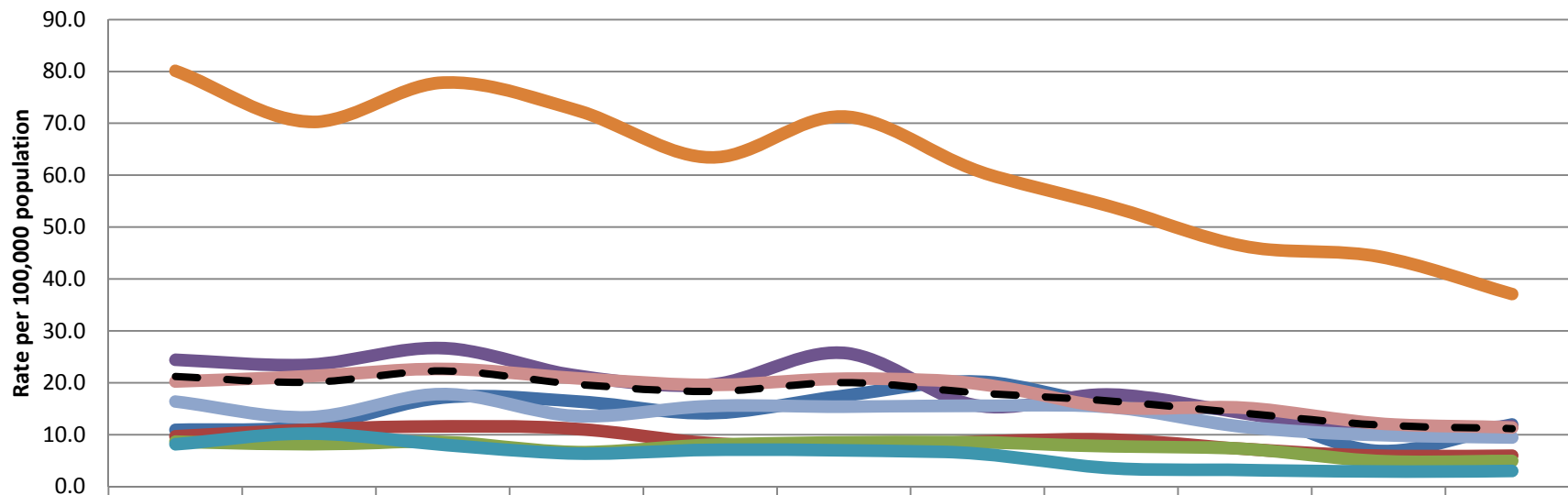


Rate of Non Fatal Hospitalizations for All Firearm Injuries, by SPA of Residence and Year



	2000	2001	2002	2003	2004	2005	2006	2007	2008	2009	2010
SPA 1	10.9	11.6	17.1	16.4	14.1	17.5	20.2	15.8	14.4	6.9	12.0
SPA 2	9.6	11.0	11.6	11.1	8.3	7.6	8.6	9.0	7.2	5.9	6.0
SPA 3	8.7	8.2	8.6	6.7	8.1	8.5	8.5	7.8	7.3	4.9	4.9
SPA 4	24.4	23.5	26.7	21.4	19.6	25.7	15.6	17.7	14.1	10.6	11.6
SPA 5	8.2	10.2	8.1	6.4	7.1	7.0	6.3	3.5	3.2	2.9	3.0
SPA 6	80.1	70.3	77.8	72.5	63.4	71.3	60.9	54.0	46.3	44.3	37.1
SPA 7	16.4	13.3	17.8	13.6	15.5	15.4	15.6	15.3	11.5	9.9	9.4
SPA 8	20.2	21.2	22.7	20.9	19.6	20.8	19.8	15.3	15.2	12.2	11.4
LAC Overall	21.2	20.1	22.3	19.7	18.3	20.0	18.0	16.5	14.1	11.8	11.1

— SPA 1
 — SPA 2
 — SPA 3
 — SPA 4
 — SPA 5
 — SPA 6
 — SPA 7
 — SPA 8
 - - LAC Overall

Suggested Citation: Los Angeles Department of Public Health, Injury & Violence Prevention Program (May 2011). Rate of Non Fatal Hospitalizations for All Firearm Injuries, by SPA of Residence and Year [online data table]. [cited Year Month (abbreviated) Day] from www.ph.lacounty.gov/ivpp

Data Sources: Office of Statewide Health Planning and Development, Hospital Discharge Data

Population Estimates & Predictions (PEPS) Data, Los Angeles County Office of Urban Research

Note: In some tables/charts values for some SPAs and years are suppressed because of small numbers.